

## FireCell Radio Hub Serial Cable – Installation Instructions

### Package Contents:

1x Radio Hub Serial Cable  
1x Driver Installation CD

**PLEASE NOTE: Examples shown below are from Windows XP. Other versions of Windows may vary.**

### Instructions:

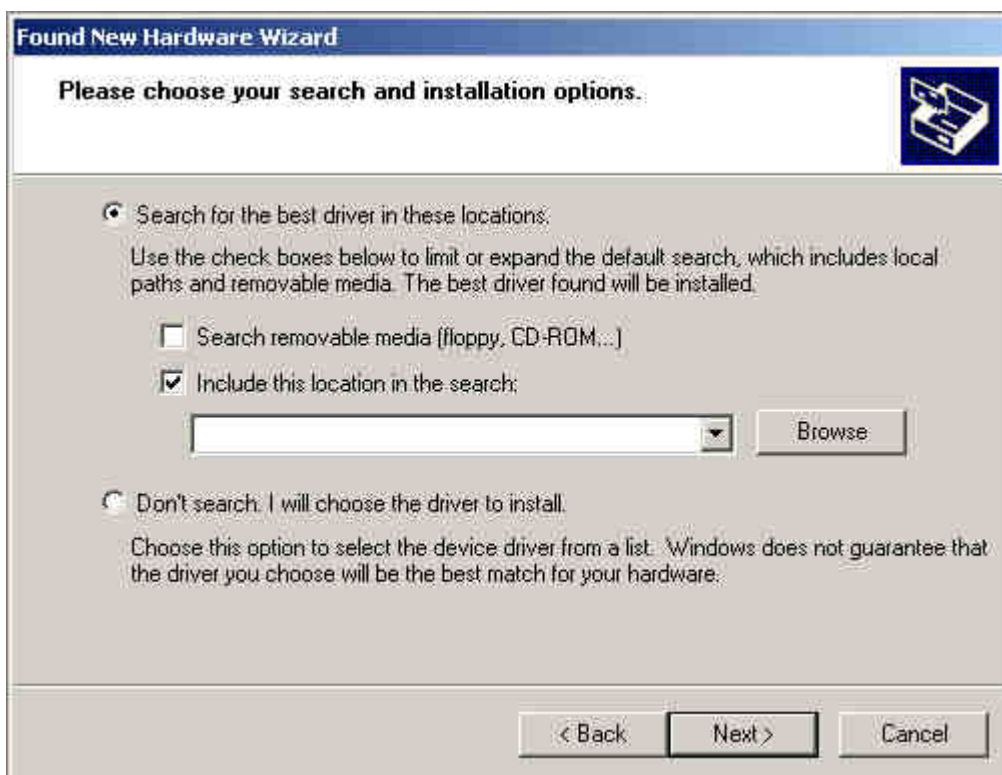
1. Insert the Driver installation CD into your PC.
2. Insert the USB end of the Radio Hub Serial Cable into your PC.
3. The PC should detect the cable and pop up the following box:



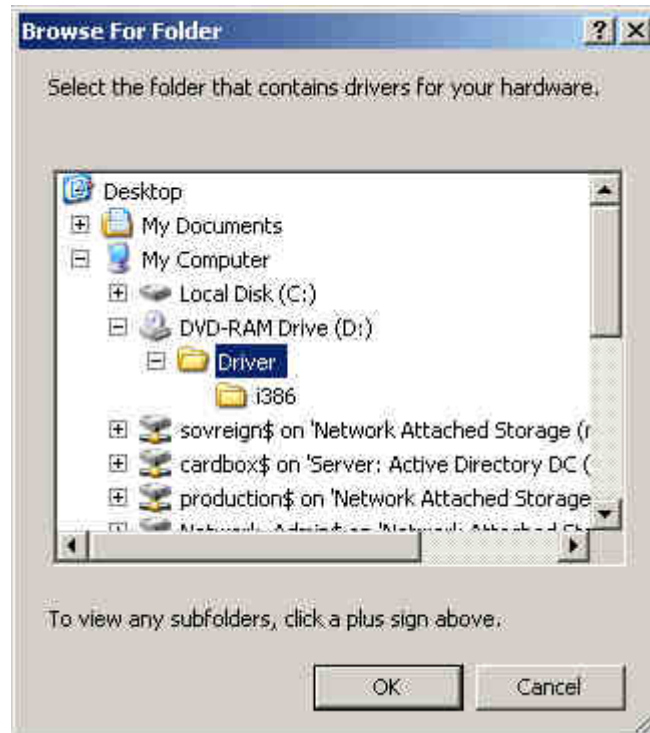
4. In the section 'Can Windows connect to Windows Update to search for software?' click the '**No, not at this time**' radio button and then click **Next >**.
5. The dialog box should change to the one shown below. Click the '**Install from a list or specific location (Advanced)**'



6. The following screen will show:



7. Ensure the '***Include this location in the search:***' is ticked as above. Click the **Browse** button and browse to the Driver folder on the CD as shown



8. Click **Next** and driver should install. You will then be presented with the following screen. Click **Finish**.
9. Another install dialog box will pop up. Follow the steps 3-7 as shown previously. The driver is now installed.